

General Data

- Molecular Mass:** 446.50
Solubility: Chloroform, Alcohol, DMF, DMSO
Insoluble: Water
Storage: Store in absence of light and refrigerate

Description

Highly sensitive, hydrophobic fluorescent dye

Applications

- Cell staining
- Fluorescent probe
- Dye for beads
- Gel-electrophoresis

Advantages

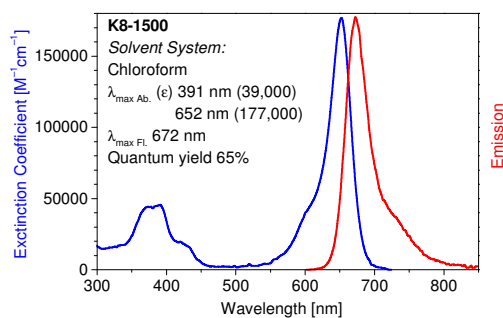
- Highly fluorescent probe
- Perfectly suited for excitation with the 380-nm, 405-nm and 635-nm diode lasers

Spectral Data

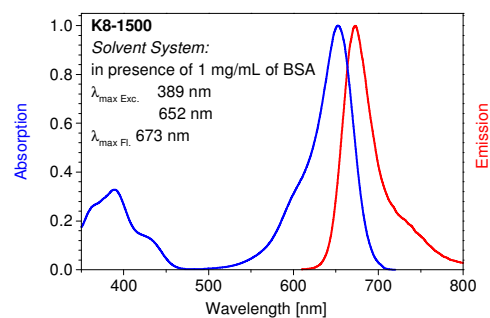
Solvent System: chloroform

Solvent	Absorption max. [nm]	Extinction Coefficient [$M^{-1}\cdot cm^{-1}$]	Fluorescence* max. [nm]	Quantum Yield [%]
Chloroform	652	177,000	672	65
	391	39,000		
Methanol	628		654	22
Phosphate buffer pH 7.4	622		644	<0.1
In presence of 1 mg/mL of BSA	652		672	80

* Excitation at 655 nm

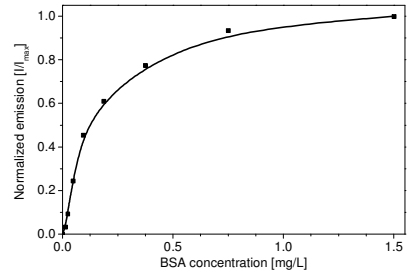


Absorption and emission spectrum of **K8-1500** in chloroform



Absorption and emission spectrum of **K8-1500** in presence of 1 mg/mL of BSA

Product number: K8-1500
Product name: Square-655



Normalized emission of **K8-1500** in BSA solutions vs. BSA concentration